

Community Solar

How can I participate in community solar development?

Illinois Solar for All (ILSFA) ensures that communities have a voice in how community solar projects are developed. Approved Vendors are required to engage the local community on how projects are sited and how subscribers can participate. This helps to ensure that communities see greater benefits and play an important part in the development process. Community-based organizations will work with Approved Vendors during planning and development. Approved Vendors will be required to demonstrate this engagement for their projects to be approved by the program. Visit IllinoisSFA.com to learn more.

What is a subscriber?

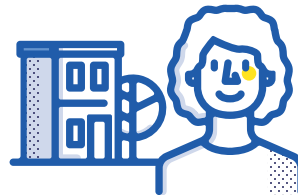
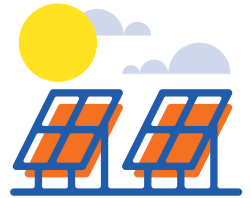
A subscriber is an electric customer who owns or leases a portion of a community solar installation. The subscriber may receive a credit on their electric bill for the energy the panels produce.

Who can subscribe to community solar?

- In a typical community solar system, any customer within the utility's service area can subscribe to a community solar project.
- For the ILSFA Low-Income Community Solar sub-program, eligibility is limited to:
 - Low-income households: Households with an income that is 80% or less of the Area Median Income.
 - Income eligibility for low-income households must be verified by the Approved Vendor and validated by the Program Administrator. Several methods are allowed for income verification. If participants are not eligible for ILSFA, the Illinois Shines program may be an option. Visit IllinoisShines.com for more information.
- Non-Profit and Public Facilities Anchor Subscriber: A single non-profit or public facility can serve as the anchor subscriber and receive the same level of savings as low-income households

What is a community solar project?

Community solar allows members of a community to subscribe to a single solar system. A solar array is installed at a site served by your local electrical utility. Anyone with an electricity account with that utility and is eligible for the program, can subscribe to shares of that array.



Your electricity supplier will credit the electricity accounts of all subscribers based on their share of the electricity generated by the array.

Credits that subscribers see on their bill can vary by subscriber, but typically include the value of their energy supply. With ILSFA, all participating subscribers will see savings.



Who owns the solar installation?

There are a number of business models that can be implemented for community solar. These include projects owned by utilities, developers, or non-profits.



What kind of sites are optimal for community solar?

A community solar system can be installed on a rooftop, on the ground, or even as a canopy over a parking lot. Businesses, schools, libraries, houses of worship, and community centers are examples of sites that can host community solar. Any open space can host a ground-mounted system, even landfills or brownfields.

Sites with no shading from trees, neighboring buildings, or other objects are ideal for solar. However, even sites with some obstruction can produce a significant amount of solar energy with the right system design. Sloped or flat roofs can accommodate solar, and although a south-facing array is ideal, many configurations can work.

For more information about ILSFA:

Online: IllinoisSFA.com

Phone: 1-888-970-ISFA (4732)

Contact information for grassroots education organization:

Organization: _____

Contact: _____

Email: _____

Phone: _____